

Pivot

When searching for lighting flexibility, look no further than our 3", 4" & 6" flat gimbal LED downlights. With powerful lumen output and the ability to direct light with a 360° rotation and a 90° tilt angle, this product will meet your every need.

UPGRADE

WET

90°
SWIVEL/DIRECTIONAL

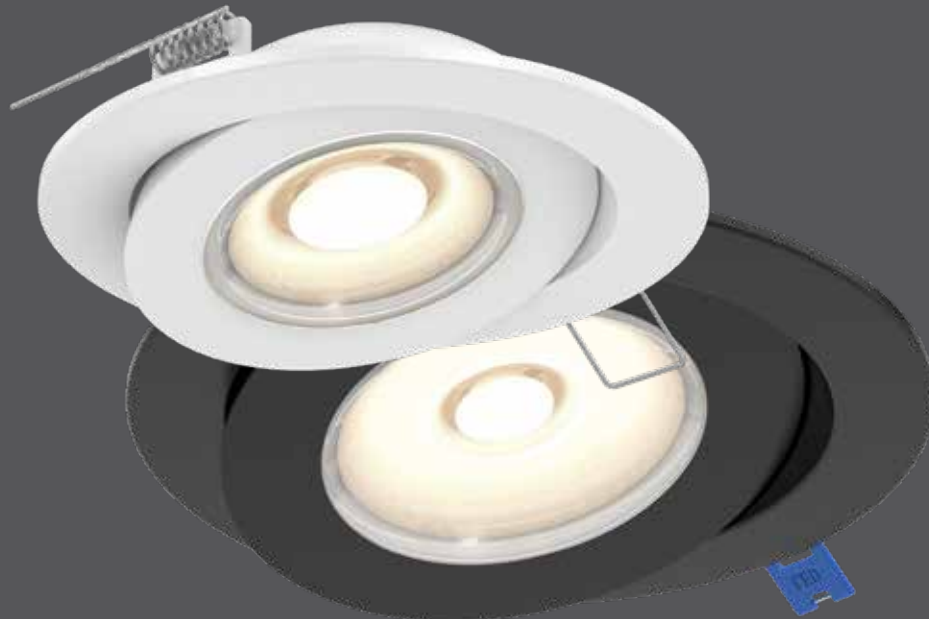
ETL US
Intertek

IC
RATED

AIR TIGHT

COLOR TEMPERATURE*

2700k 3000k 3500k 4000k 5000k



*Models FGM3-CC , FGM4-CC and FGM6-CC only

Model	Size	Watts	Delivered lumens	LED lumens	CRI	Color °T	Voltage
FGM4-3K	4"	9 W	700 lm	850 lm	90	3000 K	120 V
FGM3-CC	3"	6 W	540 lm	690 lm	90	2700, 3000, 3500, 4000, 5000 K	120 V
FGM4-CC	4"	9 W	700 lm	850 lm			
FGM6-CC	6"	14.5 W	1050 lm	1200 lm			

Specifications

Every fixture includes a junction box with integrated dimmable driver
 Can be daisy chained
 Superior LED performance and lifespan
 90° tilting, 360° rotation
 Minimal heat emission
 Aluminum construction
 Switch-selectable CCT: 2700K/3000 K/3500 K/4000 K/5000 K*
 Low profile
 40° beam spread
 IC certification (suitable for direct contact with insulation)
 Air-tight certified as per ASTM E283-04
 Suitable for wet locations
 Refer to website for dimmer compatibility
 Ideal operating temperature:
 -20° to 40° C
 5-year warranty

Finish

- **BK** Black
- **SN** Satin Nickel (FGM4, FGM6 only)
- **WH** White

Accessories

- RFP-UNI**
Universal rough-in plate
- RFP-46**
Rough-in plate for 4" and 6" models

Order example

FGM4-CC-BK
 4" flat gimbal recessed downlight with 700 Lumens at 3000 K in a black finish

Note

Other Color °T and Finishes available, but may require MOQ's and longer lead times. Please contact your DALI representative for more information.

